

# INEOS

---

## GRENADIER

**ACCESSORIES**



Vehicle wrap shown is not available for purchase.



# INTRODUCTION

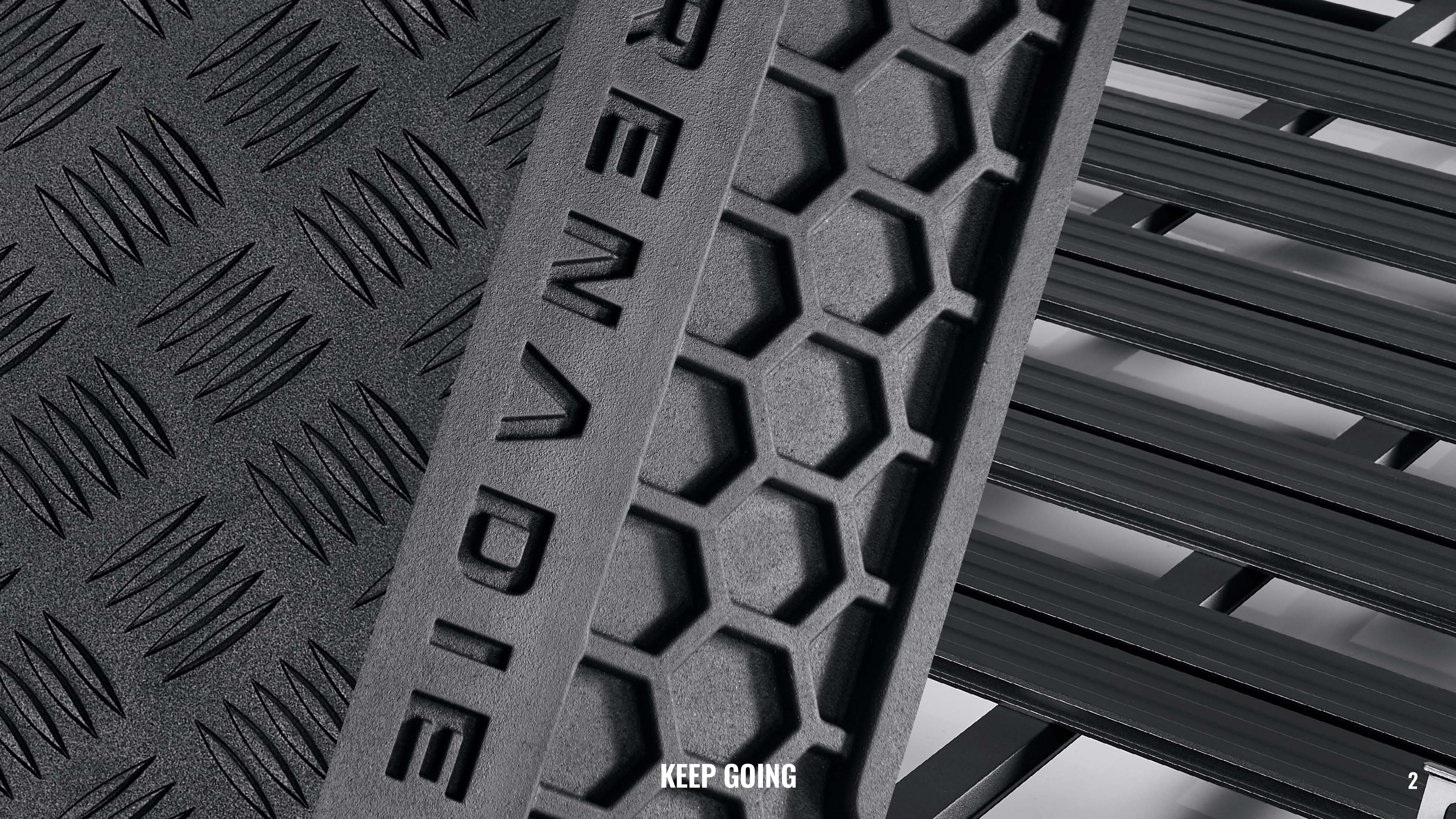
The Grenadier is built on purpose. A working tool designed to help you get the job done. Given the huge variety of tasks our rugged 4X4 will face around the world, we know you'll want to customise yours to your exact needs. That's why we've developed it as a blank canvas, ready for you to make it your own.

From simply enhancing your everyday driving to storing and transporting essential tools and kit, every accessory is designed so they can be fitted easily by you. Or, if you prefer, one of our trained technicians. And all have undergone the same rigorous testing as the Grenadier to be as tough and reliable as the vehicle itself. We trust you'll find all the essential 4x4 kit you need.

Scan the QR code to join Mark Evans as he explores and fits a selection of accessories, and discusses how to customise your Grenadier.







PROVIDE

KEEP GOING





# EXTERIOR

The Grenadier is built to be tough, capable and reliable. It's also a blank canvas for you to add the accessories you need to protect and equip yours as you get the job done, and return safely for many years to come. And for when off-the-beaten-track is your daily drive, our recovery accessories give you the gear to recover with confidence in any terrain, and any environment. All developed with industry-leading suppliers, so you're always prepared.

SIDE RUNNERS

ROCK SLIDERS

BULL BAR

SIDE PROTECTION RAILS

LED LIGHTBAR

CHECKER PLATES

CYCLONE PRE-CLEANER

LOCKING WHEEL NUTS

REMOVABLE REAR WINCH

RECOVERY KIT

Vehicle wrap shown is not available for purchase.



## KEEP GOING



# SIDE RUNNERS

Good ground clearance doesn't mean getting in and out of the Grenadier has to be a struggle. Our Side Runners make the cabin easy to access. Slip-resistant footholds also provide a secure platform to stand on, for easy roof access along the full length of the vehicle. Constructed from powder-coated steel, they offer extra protection to your sills from dirt, rocks, and gravel. And act as handy vantage points when you're up to your axles in mud.

## SPECIFICATIONS

WEIGHT	25kg
STEP HEIGHT FRONT/REAR	373mm/395mm
CLEARANCE TO SILL (HORIZONTAL)	113mm
MATERIAL	Powder-coated S235JR Steel with rubber-protected (slip-resistant) stepping surfaces
COLOUR	Black
LOAD CAPACITY (PER SIDE)	300kg
BREAKOVER ANGLE	Not affected
VEHICLE GROUND CLEARANCE	Not affected
SIDE RUNNER GROUND CLEARANCE	Min. 272mm



KEEP GOING





# ROCK SLIDERS

Heavy duty. Powder coated. Steel construction. Our Rock Sliders are designed specifically to protect the body of your Grenadier when off-roading. Tucking in close to the undercarriage they have minimal effect on breakover angle and ground clearance. And together they're capable of holding the entire gross vehicle weight. As well as offering anchoring points for a Hi-Lift Jack.

## SPECIFICATIONS

WEIGHT	51kg
CLEARANCE TO SILL (HORIZONTAL)	40mm
MATERIAL	Powder-coated S355JR steel
COLOUR	Black
LOAD CAPACITY (PER SIDE)	2000kg from underside
BREAKOVER ANGLE	Not affected
VEHICLE GROUND CLEARANCE	Not affected
ROCK SLIDER GROUND CLEARANCE	Min. 289mm

Vehicle wrap shown is not available for purchase.



**KEEP GOING**



# BULL BAR

Protect the front of your Grenadier with this tough Bull Bar\*. Custom designed to fit your Grenadier, you can bolt it onto the bumper easily, without obscuring your headlights. And also mount extra lighting or antennae. Select it with or without our 5.5 tonne integrated front winch.

## SPECIFICATIONS

WEIGHT	40kg
VEHICLE LENGTH VS STANDARD	+38mm
MATERIAL	Powder-coated Q325A Steel
COLOUR	Black
ATTACHMENTS LOAD CAPACITY (DYNAMIC)	Up to 150kg Dynamic



# SIDE PROTECTION RAILS

Built specifically for the Grenadier, these Side Protection Rails<sup>†</sup> protect your fenders and wheel arches when you're off-road.

## SPECIFICATIONS

WEIGHT	7kg
WIDTH	1253mm
CLEARANCE TO FENDER	70mm
MATERIAL	Powder-coated S235JR Steel
COLOUR	Black

\*Not compatible with Park Assist Front (PDC) option.

\*Always ensure engine air inflow when fitting attachments to the Bull Bar.

Vehicle wrap shown is not available for purchase.

<sup>†</sup>Bull Bar and Side Runners or Rock Sliders are required for fitment.



**KEEP GOING**



# LED LIGHT BAR

Off-roading in harsh environments, setting up camp at dusk, working in foul weather? You need lighting you can rely on. Mount the 40" LED Light Bar to the Roof Rack or Cross-bars and hook up to the optional exterior roof connectors. Flick the switch on the Overhead Control Panel for serious illumination. Comes with a fitted cover for when not in use.

## SPECIFICATIONS

WEIGHT	3.6kg
WIDTH / HEIGHT	102 / 50mm
OPERATING POWER OUTPUT	210W
NUMBER OF LEDS	42
MAX AMPS	14.9amp
LIGHT COLOUR	Cold (5,700k)
BRIGHTNESS	17,640 Lumens
BEAM PATTERN	Combo (long distance & surrounding)

Optional High Load Auxiliary Switch Panel & Electrical Preparation required.

Off-road use only.

Vehicle wrap shown is not available for purchase.



**KEEP GOING**



# CHECKER PLATES

The Grenadier's flat-top reinforced front fenders are designed to be practical – as a viewing platform or handy work surface. Make the most of them by adding our e-coated, aluminium Checker Plates. They increase the load the fenders can handle to 150kg each. And they're slip-resistant, so you can stand on them to safely secure and inspect loads on the roof, or get a better view of the wildlife.

## SPECIFICATIONS

WEIGHT	1.8kg
SURFACE AREA	895mm x 295mm
SURFACE PATTERN	Diamond Plate
MATERIAL	3mm Aluminium alloy
COLOUR	Black
LOAD CAPACITY (STANDARD)	150kg (90kg*)
FIXING SYSTEM	Double-sided tape + rivets



ROW Road Compliance.

USMCA and Rest of World fenders can take 90kg load without the checker plate e.g. sitting\*  
Additional fender reinforcement structure standard on USMCA and ROW vehicles.

Vehicle wrap shown is not available for purchase.



KEEP GOING



# CYCLONE PRE-CLEANER

Our Cyclone Pre-Cleaner attaches to the Raised Air Intake to provide an added layer of filtration for your engine to prevent excess dirt and dust getting in. A must if you regularly face extreme dust or sand in your Grenadier.

## SPECIFICATIONS

WEIGHT	1.8kg	
DIAMETER	280mm	
MATERIAL	Heavy-duty solid polypropylene	
COLOUR	Black	
EFFICIENCY TEST	SO 5011, SAE J726	
RATED FLOW LOW RANGE	R 12.7 m <sup>3</sup> /min (448 cfm)	
RATED FLOW HIGH RANGE	R 24.1 m <sup>3</sup> /min (851 cfm)	
SERVICE INTERVALS (CLEANING)	Self-cleaning (no maintenance bowl to clean)	
HEIGHT	With Cyclone 2185mm	Without Cyclone 2050mm

INEOS Automotive Raised Air Intake option required.

Off-Road use only.

Vehicle wrap shown is not available for purchase.



## KEEP GOING



# LOCKING WHEEL NUTS

Secure all your Grenadier's wheels with this locking wheel nut set.

## SPECIFICATIONS

WEIGHT	0.6kg
MATERIAL	Bright EN 10277 steel
COLOUR	Silver
QUANTITY	5
SECURITY PATTERN	Computerised

Compatible with all INEOS Automotive wheel options as well as the optional Spare Wheel Lockable Storage Box.

Available as an option when you order.



**KEEP GOING**



# REMOVABLE REAR WINCH

The Grenadier is available with a factory-fitted front winch. But if you want to be prepared for anything, add this 3.5 tonne self-recovery winch to your vehicle. Simple to fit and remove, it slots into the rear towing interface, and can be shared among vehicles with ease. Remote control operation, so you can keep well clear while it's in use. Pack it up and store it in the vehicle or at home when you don't need it.

## SPECIFICATIONS

WEIGHT	42kg
ROPE MATERIAL	UHMWPE
ROPE LENGTH	20m
PULLING CAPACITY	3,500kg
VEHICLE LENGTH VS STANDARD	+170mm
WIDTH X HEIGHT X DEPTH	587mm x 289mm x 371mm
AMPERAGE (MIN/MAX)	65 Amps / 150 Amps
CONTROL	Wireless
SERVICE INTERVAL	Service at 36 months
FREESPOOL OPERATION	Manual, rotating lever
SPEED	6m/min (No load, average)

Optional High Load Auxiliary Switch Panel & Electrical Preparation required.

Optional towing interface required.

Off-road use only, the Removable Winch must be removed and stowed before joining a public highway.



## KEEP GOING



# RECOVERY KIT

This handy addition to your off-road tools includes all the basics you need to boost your winching capability, including alloy pulley, bow shackles, soft shackles, non kinetic recovery strap, one tree saver strop, and a pair of gloves. All neatly stowed in their own canvas bag.

KIT CONTENT	SPECIFICATIONS
1x Alloy pulley	MBL 5T
2x Bow shackle	4T WLL 7 to 1 Safety Factor- MBS 28T
2x Synthetic soft shackle	12mm rope MBS 13T
1x Non kinetic recovery strap	10M/11T
1x Non kinetic recovery strap	4M/12T
1x Tree saver strop (Roundsling)	3M/10T MBS
1x Bag	24L
1x Pair of Gloves	Synthetic Leather and Elastane



Before towing or winching consult your Owner's Manual or closest Retail Partner for more details. Off-road driving and related equipment requires advanced training and experience and may result in property damage and/or injury. Always check vehicle, route and conditions ahead before proceeding.



**KEEP GOING**





# INTERIOR

Every interior accessory is designed to make your life easier, and your vehicle as configurable, practical, and durable as possible. Ready for you to take on challenging work and adventures around the world. And be best equipped for the tasks at hand. Whatever you need to transport, our highly adaptable cargo management range provides everything you need to load and organise kit quickly, safely, and easily.

SEAT COVERS

RUBBER FLOOR MATS

CARPET FLOOR MATS

TAILGATE TABLE

CARGO BARRIER

LOADSPACE DIVIDER

CARGO MANAGEMENT SYSTEM

LUGGAGE ORGANISER

LOADSPACE PARTITION NET

LUGGAGE NET

QUICK RELEASE TIE-DOWN RINGS



**KEEP GOING**





# SEAT COVERS

Protect your seats from water, mud, heavy kit and general wear and tear with our Heavy-Duty Seat Covers. Easy to fit, clean and remove, you can quickly transform your Grenadier from weekday workhorse to smart weekend family vehicle.

## SPECIFICATIONS

WEIGHT	Front Row 1.2kg, Rear Row 2.4kg
MATERIAL	600D Polyester
COLOUR	Black
CHOICE	Front Row / Rear Row (Sold Separately)

Airbag compatible.



**KEEP GOING**



# RUBBER FLOOR MATS

Tough, practical, and made for heavy duty use. These high-walled, moulded mats protect the floor from water, sand, dirt, or anything unsavoury that's attached itself to your footwear. Easy to fit and remove, and built to last.

## SPECIFICATIONS

WEIGHT	4.2kg
MATERIAL	TPE-70 shore A compound
COLOUR	Black
PATTERN	Hexagon
FIXING	Driver's mat only
QUANTITY	4

# CARPET FLOOR MATS

These high-quality Carpet Floor Mats\* made of regenerated nylon are shaped to the footwells. A smart addition to your vehicle's interior that protect your floor trim, too.

## SPECIFICATIONS

WEIGHT	1.7kg
MATERIAL	800 gr/m <sup>2</sup> Econyl® Jarn carpet
COLOUR	Black
PATTERN	Plain
FIXING	Driver's mat only
QUANTITY	4

KEEP GOING

\*Also available as an option during the order process.







#### SPECIFICATIONS

WEIGHT	6.6kg
WIDTH	690mm
DEPTH	390mm
MATERIAL	Alloy zinc-plated steel
COLOUR	Black
LOAD CAPACITY (UPRIGHT - DYNAMIC)	10kg
LOAD CAPACITY (DEPLOYED - STATIC)	30kg

## TAILGATE TABLE

Fitted to the rear 70 door, this foldable Tailgate Table has a wide range of uses. When stowed upright it works as a panel for attaching up to 10kg of kit or tools. Reached your camp for the night? Open the rear doors, fold down and make use of the extra space. It can then hold up to 30kg. Perfect for a camp kitchen set-up with stove and prep area.

Stove and camping cooking set not included.



**KEEP GOING**



# CARGO BARRIER

Built from powder-coated steel for extra toughness, this handy removable cargo barrier increases safety inside your Grenadier by keeping pets, tools, kit or whatever else you're transporting safely in the loadspace.

## SPECIFICATIONS

WEIGHT	5.4kg
HEIGHT	520mm
WIDTH	1,420mm
MESH DENSITY	37mm steel wire grid
MATERIAL	Powder-coated S235JR steel
COLOUR	Black
FIXING POINTS	Eyelets/Bolt-on brackets



Always secure cargo in the loadspace.



**KEEP GOING**



# LOADSPACE DIVIDER

Separate your pets, cargo, shopping, luggage and more by splitting your vehicle's loadspace for a safer, more secure journey every time, on any terrain. Lines up with the 60:40 Split Folding Rear Bench Seat, so you can adapt the interior to suit your exact needs.

## SPECIFICATIONS

WEIGHT	4.5kg
HEIGHT	1,000mm
DEPTH	890mm
MESH DENSITY	37mm steel wire grid
MATERIAL	Powder-coated S235JR steel
COLOUR	Black
FIXING POINTS	Cargo barrier/Fixing point in headlining

Cargo barrier accessory required for fitting.  
Always secure cargo in the loadspace.



KEEP GOING



# CARGO MANAGEMENT SYSTEM

Attaches to the Interior Utility Rails to provide a flexible way to divide and secure cargo in the loadspace. Keeping it, and you, safe on the move. Includes a telescopic frame, flexible band and four slidable adapters.

## SPECIFICATIONS

TELESCOPIC FRAME MIN/MAX LENGTH	768mm / 1250mm
FLEXIBLE BAND MIN/MAX LENGTH	33mm / 900mm
TELESCOPIC FRAME HEIGHT	185mm
FLEXIBLE BAND HEIGHT	170mm
SLIDABLE ADJUSTERS	X4

Interior Utility Rails required for fitting. Not to be used with Exterior Utility Belt.

Always secure cargo in the loadspace.



**KEEP GOING**

# LUGGAGE ORGANISER

Open out to half- or full-size, to carry or tidy tools, sporting equipment, shopping and more. It's easy to store and fold when not in use and built to last with reinforced base plates and sturdy side walls.

## SPECIFICATIONS

LENGTH (FULL/HALF)	570mm / 290mm
WIDTH	360mm
HEIGHT	310mm
VOLUME CAPACITY (FULL/HALF)	45L / 22.5L
MATERIAL	Polyester
COLOUR	Black



# LOADSPACE PARTITION NET

The simple and effective way to protect passengers from items stowed in the loadspace, this net prevents loose cargo from entering the front of the vehicle. Lightweight and built to last, it quickly connects to D-loops and fixings in the roof lining and is easy to detach when you don't need it.

## SPECIFICATIONS

WEIGHT	0.4kg
HEIGHT	560mm
WIDTH	740mm
MESH DENSITY	0.03g/cm <sup>2</sup>
MATERIAL	Polyester fabric oxford 400D pu waterproof
COLOUR	Black
FIXING POINTS	Eyelets/Tie-down rings

Always secure cargo in the loadspace.



KEEP GOING

# LUGGAGE NET

This handy elasticated net secures items and luggage to the floor of your vehicle to stop them from shifting around the loadspace. Easily hooks to tie down points on the floor.

## SPECIFICATIONS

WEIGHT	0.4kg
DEPTH	550mm
WIDTH	750mm
MESH DENSITY	50mm
MATERIAL	Net: PES+Spandex Hooks: PA6-GF30
COLOUR	Black
FIXING POINTS	Tie-down rings





# QUICK RELEASE TIE-DOWN RINGS

These four practical, quick-release Tie-down Rings are compatible with both our Interior Utility Rail and Exterior Utility Belt. So, you can adapt them to a range of uses. Add to the Interior Utility Rails for extra tie-down points. And when working in the field, clip kit to the Exterior Utility Belt for easy access.

SPECIFICATIONS	
WEIGHT	0.2kg
MATERIAL	Main body: glass fibre reinforced injection moulding Lashing loop: zinc-plated steel
COLOUR	Black and silver
FIXING POINTS	Exterior Utility Belt and Interior Utility Rail
CONTENTS	Pack of 4

On-road use prohibited, cargo secured to Exterior Utility Belt must be removed and stowed before joining a public highway.  
Add-ons not included.



**KEEP GOING**





# UP TOP

Work, leisure, off-road adventure. Whatever you need to carry up top, our choice of add-on accessories for your Roof Rack and Cross-bars are designed to help you tackle any task. So, whether you're hitting the trails, heading off-piste, catching some waves, camping in the wilds, or just need to get the job done, you can carry all the kit you need.

## ROOF RACK

BATWING SIDE AWNING

ROTOPAX™ MOUNTING BRACKET FITTING KIT

SPARE WHEEL CARRIER

JERRY CAN MOUNT

LOAD CORNER BRACKETS

HI-LIFT JACK MOUNT

WORK LAMP BRACKET

FOLDING AERIAL MOUNT

GAS BOTTLE HOLDER

LOCKDOWN SECURITY CABLE

SURFBOARD CARRIER

SAND LADDER BRACKETS

HEAVY DUTY SHOVEL

TOOL BRACKET

## CROSS-BARS

CARGO BOX

KAYAK MOUNTS

BIKE CARRIER

SKI/SNOWBOARD CARRIER

ADJUSTABLE LOAD HOLDER

CARGO LOAD STRAPS

ROOF TIE-DOWN RINGS



KEEP GOING



# ROOF RACK

Designed by experts Rhino-Rack, and built from steel and aluminium, this sturdy Roof Rack is created specifically to fit your Grenadier. Powder-coated for corrosion and scratch resistance, it's built to last. Batwing Side Awning, Surfboard Carrier, Spare Wheel Carrier – whatever add-on accessory you choose, installing our Grenadier Roof Rack accessories is simple.

## SPECIFICATIONS

WEIGHT	60kg
LENGTH	2530mm
WIDTH	1590mm
MATERIAL	Platform: 6063-T5 aluminium Foot: Stainless steel
COLOUR	Black
PAYLOAD (DYNAMIC/STATIC)	90kg / 360kg
FIXING POINTS	4 on each side, attached to drain gutter
ACCESSORIES MOUNTING SYSTEM	T-slot on five longitudinal slats and outer perimeter
VEHICLE HEIGHT	With Roof Rack 2150mm (+100mm)



Full Length Roof Rack designed and engineered by Rhino-Rack for INEOS Automotive, proven during Grenadier testing.

Loading equipment on the roof may change the vehicle's handling characteristics and users should not overload the vehicle, any options or accessories (or any part of them) beyond their intended capacities.

Vehicle wrap shown is not available for purchase.



**KEEP GOING**



# BATWING SIDE AWNING

This heavy-duty, all-weather Integrated Side Awning deploys 270° to shelter you from the elements. Mounted on the side of the Roof Rack or Cross-bars, it's quick and easy to put up and comes complete with poles, ropes, and pegs. When not in use, simply store it away in the tough PVC bag.

## SPECIFICATIONS

WEIGHT	21.5kg	
OPENING	270 degrees opening	
MATERIAL	Awning	210D polyester PU2000mm waterproof Rip stop Poly Cotton Canvas powder-coated poles and frame
	Storage bag	Heavy duty 580gsm PVC
FIXING POINTS	T-slot (left side of vehicle)	
CONTAINS	1 awning	



Loading equipment on the roof may change the vehicle's handling characteristics and users should not overload the vehicle, any options or accessories (or any part of them) beyond their intended capacities.



**KEEP GOING**



# ROTOPAX™ MOUNTING BRACKET FITTING KIT

A set of four channel nuts with bolts that allow you to quickly secure and remove a RotopaX™ mounting bracket to attach RotopaX™ containers\* to the roof of your Grenadier.

## SPECIFICATIONS

WEIGHT	0.2kg
MATERIAL	Galvanised 304 stainless steel
LOAD CAPACITY	One RotopaX™ bracket and container*
FIXING POINTS	T-slot
CONTENTS	Kit for one RotopaX™

\*RotopaX™ container and RotopaX™ mounting bracket not included.

Loading equipment on the roof may change the vehicle's handling characteristics and users should not overload the vehicle, any options or accessories (or any part of them) beyond their intended capacities.



# SPARE WHEEL CARRIER

Want to carry a spare wheel? Load and secure an extra wheel on the Roof Rack with this useful carrier.

## SPECIFICATIONS

WEIGHT	1.5kg
MATERIAL	Mild Steel/ ABS Plastic
LOAD CAPACITY	One spare wheel†
FIXING POINTS	T-slot
CONTENTS	Metallic bracket

†Spare wheel not included.

**KEEP GOING**



# JERRY CAN MOUNT

Need to take extra fuel or water for those long, remote trips? Fill up a 10- or 20-litre jerry can and simply slot it into the mount accessory then secure with the strap provided.

## SPECIFICATIONS

WEIGHT	3kg
MATERIAL	Powder-coated steel black
LOAD CAPACITY	One jerry can (10L or 20L)
FIXING POINTS	T-slot
CONTENTS	Metallic bracket + strap

Jerry can not included.  
Loading equipment on the roof may change the vehicle's handling characteristics and users should not overload the vehicle, any options or accessories (or any part of them) beyond their intended capacities.



# LOAD CORNER BRACKETS

Coolers, storage bins, toolboxes – secure square, hard-shelled containers on the Roof Rack. Comes with four corner brackets, bolts and eyelets. Simply adjust to your load size, bolt down and use your own straps to secure it.

## SPECIFICATIONS

WEIGHT	1kg
MATERIAL	Powder-coated diecast aluminium
LOAD CAPACITY	40kg
FIXING POINTS	T-slot
CONTENTS	4 Metallic brackets+ eyelets

Toolbox not included.  
Straps not included.

**KEEP GOING**



# HI-LIFT JACK MOUNT

Mount your Hi-Lift jack to the Roof Rack or Cross-bars easily with these two sturdy brackets.

## SPECIFICATIONS

WEIGHT	1kg (pair)
MATERIAL	Powder-coated steel
LOAD CAPACITY	One Hi-Lift Jack
FIXING POINTS	T-slot
CONTENTS	2 metal brackets

Not compatible with hydraulic Hi-Lift Jacks, only compatible with standard mechanical Hi-Lift Jack.

Hi-Lift Jack not included.

Loading equipment on the roof may change the vehicle's handling characteristics and users should not overload the vehicle, any options or accessories (or any part of them) beyond their intended capacities.



**KEEP GOING**



# WORK LAMP BRACKET

You can never have too much light, especially when bad weather rolls in. This bracket\* provides a strong, stable platform for small spotlights. And gives you the flexibility to mount them anywhere along the Roof Rack or Cross-bars.

## SPECIFICATIONS

WEIGHT	0.5kg
MATERIAL	Powder-coated steel
FIXING POINTS	T-slot
CONTENTS	1 universal light bracket

\*Light must not be switched on when driving on public road.

\*Spotlight not included.

Loading equipment on the roof may change the vehicle's handling characteristics and users should not overload the vehicle, any options or accessories (or any part of them) beyond their intended capacities.



KEEP GOING

# FOLDING AERIAL MOUNT

Improve your long-range radio and TV reception using our versatile aerial mount†. You can also use it with sand flags, small LEDs and spotlights. With seven steps across 180° of rotation you can always find the perfect spot, then secure it in place.

## SPECIFICATIONS

WEIGHT	1kg
MATERIAL	Powder-coated steel
FIXING POINTS	T-slot
CONTENTS	1 bracket

†Aerial not included.



# GAS BOTTLE HOLDER

Store a 4kg gas cylinder on the Roof Rack by strapping the bottle into the holder and securing with the ratchet strap provided.

## SPECIFICATIONS

WEIGHT	1kg
MATERIAL	Mild steel
LOAD CAPACITY	4kg gas bottle
FIXING POINTS	T-slot
CONTENTS	Metallic bracket + strap

# LOCKDOWN SECURITY CABLE

With the amount of kit you can store up top, you need to be sure whatever's on view stays secure wherever you park up. Weave this plastic-sheathed cable over, through and under your cargo and lock it down.

## SPECIFICATIONS

WEIGHT	0.5kg
MATERIAL	Plastic-sheathed steel intertwined cord
FIXING POINTS	T-slot



Loading equipment on the roof may change the vehicle's handling characteristics and users should not overload the vehicle, any options or accessories (or any part of them) beyond their intended capacities.

Gas bottle not included.



KEEP GOING



# SURFBOARD CARRIER

When swell and offshore winds are calling, carry your surfboard easily on your Grenadier's Roof Rack. Longboard or shortboard up top, you'll have a clear view out of your vehicle, and free up space inside. A Stand-Up Paddleboard fits safely too. Comes with a pair of 3.5 metre tie-down straps. Easy to fit, and remove, and extremely secure. You can fit one board per carrier, and two carriers side by side.

## SPECIFICATIONS

WEIGHT	0.5kg
MATERIAL	Nylon Material outer, Diecut Foam inner
LOAD CAPACITY	One surf board
FIXING POINTS	Straps to cross slats
CONTENTS	2 pads + 2 straps

Loading equipment on the roof may change the vehicle's handling characteristics and users should not overload the vehicle, any options or accessories (or any part of them) beyond their intended capacities.

Vehicle wrap shown is not available for purchase.



KEEP GOING



# SAND LADDER FLAT & SIDE MOUNTING BRACKETS\*

Heading for the deep stuff and looking to add more grip? You'll need your sand ladders to get you out of a bind. Secure one or two sand ladders easily to either the Side or Flat Mounting Brackets.

## SPECIFICATIONS SIDE MOUNT (SHOWN IN MAIN IMAGE)

WEIGHT	2.2kg
MATERIAL	Powder-coated steel
LOAD CAPACITY	Up to two sand ladders (up to four can be accommodated if used together with the flat mount)
FIXING POINTS	T-slot
CONTENTS	2 brackets

## SPECIFICATIONS FLAT MOUNT

WEIGHT	1.7kg
MATERIAL	Powder-coated steel
LOAD CAPACITY	Stack up to 4 x Maxtrax or 2 x Tred
FIXING POINTS	T-slot
CONTENTS	2 brackets



Sand ladders not included.

Loading equipment on the roof may change the vehicle's handling characteristics and users should not overload the vehicle, any options or accessories (or any part of them) beyond their intended capacities.

Side Mount bracket for Off-Road use only.

Vehicle wrap shown is not available for purchase.



KEEP GOING



# HEAVY DUTY SHOVEL

This versatile and compact tool is made from high-carbon steel for maximum strength and is zinc-plated for an extra-long life. It's the go-to shovel for adventurers on the move. Created by Rhino-Rack to fit to the tool bracket.

## SPECIFICATIONS

WEIGHT	3kg
MATERIAL	Heavy duty powder and zinc coated carbon Steel / fibreglass shaft
CONTENTS	1 heavy duty shovel

# TOOL BRACKET

Secure your axe, shovel, kayak paddle or SUP paddle, or other tools with a 10-50mm diameter handle to the Roof Rack or Cross-bars. The pair of brackets are lockable, spring-loaded for quick locking and release, and easy to access when the going gets tough.

## SPECIFICATIONS

WEIGHT	0.3kg
MATERIAL	Powder-coated aluminium
LOAD CAPACITY	8kg
FIXING POINTS	T-slot
CONTENTS	2 tool brackets

Loading equipment on the roof may change the vehicle's handling characteristics and users should not overload the vehicle, any options or accessories (or any part of them) beyond their intended capacities.



KEEP GOING



# CROSS-BARS

This pair of lightweight aluminum Cross-bars with steel feet are built by Rhino-Rack specifically for the Grenadier. Attach your Bike Carrier, Kayak Mount, Cargo Box, or other kit across the Cross-bars' full 1700mm width. Can be fitted easily at any point along the roof.

## SPECIFICATIONS

WEIGHT	14kg
WIDTH	1700mm
MATERIAL	Crossbars: Powder-coated 6063-T6 aluminium Feet: Powder-coated Stainless Steel 304
COLOUR	Black
PAYLOAD (DYNAMIC/STATIC)	75 kg (off-road) 95kg (on-road) / 375kg
FIXING POINTS	2 on each side, attached to drain gutter
ACCESSORIES MOUNTING SYSTEM	T-slot on the four sides of each cross-bar
VEHICLE HEIGHT	With Cross-bars 2140mm (+90mm)



Roof Cross-bars designed and engineered by Rhino-Rack for INEOS Automotive, proven during Grenadier testing.

Loading equipment on the roof may change the vehicle's handling characteristics and users should not overload the vehicle, any options or accessories (or any part of them) beyond their intended capacities.

Vehicle wrap shown is not available for purchase.



**KEEP GOING**



# CARGO BOX

Store luggage and kit on the roof of your Grenadier with our lockable waterproof Cargo Box. Quickly secure to the Cross-bars T-slot. And load up from either side of the vehicle. Simply lock the box and hit the road.

## SPECIFICATIONS

WEIGHT	18kg
MATERIAL	ABS / Acrylic Styrene Acrylonitrile
LOAD CAPACITY	75kg
VOLUME CAPACITY	440L
FIXING POINTS	T-slot
CONTENTS	1 box + 2 keys



Loading equipment on the roof may change the vehicle's handling characteristics and users should not overload the vehicle, any options or accessories (or any part of them) beyond their intended capacities.

Vehicle wrap shown is not available for purchase.



**KEEP GOING**



# KAYAK MOUNTS

Safely carry your kayak on the roof with either of our mounts. The J-Style holds the kayak on its side, freeing up roof space for other accessories, or another mount. While the Saddle Mount seats a single kayak or canoe flat and lower to the roof.

## SPECIFICATIONS: SADDLE MOUNT (SHOWN IN MAIN IMAGE)

WEIGHT	2.3kg
MATERIAL	Fibreglass Nylon/Santoprene
LOAD CAPACITY	One boat up to 60kg
FIXING POINTS	T-slot
CONTENTS	4 Saddles + 4 straps

## SPECIFICATIONS: J-STYLE MOUNT

WEIGHT	4.9kg
MATERIAL	Powder-coated steel, neoprene, corrosion-resistant
LOAD CAPACITY	One boat up to 45kg
FIXING POINTS	T-slot
CONTENTS	2 J style brackets + 4 straps



Kayak not included.

Loading equipment on the roof may change the vehicle's handling characteristics and users should not overload the vehicle, any options or accessories (or any part of them) beyond their intended capacities.

Vehicle wrap shown is not available for purchase.



KEEP GOING



# BIKE CARRIER

Built from lightweight aluminium, it handles wheels from 20" to 29". Simply strap them down and lock your front fork in place with the protective bar. Then secure further with the lockable cable. Add up to three Carriers across the roof. The quick-release mechanism means you'll waste no time getting in the saddle.

## SPECIFICATIONS

WEIGHT	7.5kg
MATERIAL	Premium aluminium casting
VOLUME CAPACITY	1 bicycle up to 29" wheels
LOAD CAPACITY	1 bicycle up to 21kg
FIXING POINTS	T-slot
CONTENTS	1 bracket + 2 keys + 1 security cable

Bicycle not included.

Loading equipment on the roof may change the vehicle's handling characteristics and users should not overload the vehicle, any options or accessories (or any part of them) beyond their intended capacities.

Vehicle wrap shown is not available for purchase.



KEEP GOING



# SKI/SNOWBOARD CARRIER

Heading up the mountain for a bluebird powder day? Secure your skis and snowboards on the roof with this lockable carrier. Fits up to four pairs of skis or two snowboards back-to-back, with easy lock and release mechanism for gloved hands.

## SPECIFICATIONS

WEIGHT	2.5kg
MATERIAL	Coated aluminium + plastic rubber
LOAD CAPACITY	4 pairs of skis or 2 snowboards
FIXING POINTS	T-slot
CONTENTS	2 ski brackets + 2 keys



Snowboard not included.

Loading equipment on the roof may change the vehicle's handling characteristics and users should not overload the vehicle, any options or accessories (or any part of them) beyond their intended capacities.

Vehicle wrap shown is not available for purchase.



**KEEP GOING**



# ADJUSTABLE LOAD HOLDER

Need to move timber, ladders, or other lengthy cargo? Slot the pair of Load Holders onto the Cross-bars, adjust and lock their position with the quick-release mechanism.

## SPECIFICATIONS

WEIGHT	0.5kg
MATERIAL	Fibreglass Reinforced Nylon
FIXING POINTS	T-slot
CONTENTS	2 brackets

# CARGO LOAD STRAPS

Strap kit securely to your Roof Rack or Cross-bars with these handy Cargo Load Straps. At 5.5 metres, they're long enough to safely lock down even larger items. And with guards on the buckles, you can be sure your roof or load won't be damaged.

## SPECIFICATIONS

WEIGHT	0.5kg
MATERIAL	Polypropylene Webbing/ TPV Rubber Buckle Protector
LOAD CAPACITY	225kg
CONTENTS	2 x 5.5m rapid straps



Adjustable Load Holder and Cargo Load Straps sold separately.

Ladder not included.

Loading equipment on the roof may change the vehicle's handling characteristics and users should not overload the vehicle, any options or accessories (or any part of them) beyond their intended capacities.

Vehicle wrap shown is not available for purchase.



**KEEP GOING**



# ROOF TIE-DOWN RINGS

Need extra tie-down points to secure more kit and cargo? You can slide these four galvanised steel rings along the full length of the Roof Rack or Cross-bars, and lock into place with a quick and easy twist-lock action.

## SPECIFICATIONS

WEIGHT	1kg
MATERIAL	Base: Galvanised steel Rings: Powder-coated galvanised steel
FIXING POINTS	T-slot
CONTENTS	4 rings

Loading equipment on the roof may change the vehicle's handling characteristics and users should not overload the vehicle, any options or accessories (or any part of them) beyond their intended capacities.



**KEEP GOING**



# ADD-ON COMPATIBILITY



## ROOF RACK

SPARE WHEEL CARRIER

GAS BOTTLE HOLDER

HI-LIFT JACK MOUNTING BRACKET

JERRY CAN MOUNT

LOAD CORNER BRACKETS

SURFBOARD CARRIER

SAND LADDER FLAT MOUNTING BRACKETS

SAND LADDER SIDE MOUNTING BRACKETS

TOOL BRACKET\*

ROTOPAX™ MOUNTING  
BRACKET FITTING KIT

WORK LAMP BRACKET\*

FOLDING AERIAL MOUNT\*

LOCKDOWN SECURITY CABLE\*

ROOF TIE-DOWN RINGS\*

CARGO LOAD STRAPS\*

BATWING SIDE AWNING\*

ADJUSTABLE LOAD HOLDER\*

## CROSS-BARS

CARGO BOX

KAYAK MOUNT, SADDLES

KAYAK MOUNT, J-STYLE

BIKE CARRIER

SKI/SNOWBOARD CARRIER

WORK LAMP BRACKET\*

FOLDING AERIAL MOUNT\*

LOCKDOWN SECURITY CABLE\*

ROOF TIE-DOWN RINGS\*

CARGO LOAD STRAPS\*

BATWING SIDE AWNING\*

ADJUSTABLE LOAD HOLDER\*

TOOL BRACKET\*



\*Accessories compatible with both Roof Rack and Cross-bars.

Vehicle wrap shown is not available for purchase.



# BUYING

Kitting your Grenadier out for what you want it to do means fitting the right accessories to get the job done. Don't worry, you can do it through our [online configurator](#). Here you'll find all the information you need about our accessories. Including tech specs and fitting instructions.

# WARRANTY

Every Grenadier has durability and reliability built in. And the same applies to every one of its Accessories. Having proven each of them over 1.1 million miles of testing we're confident in their capability and quality. So we back them all up with a comprehensive five-year warranty.

# FITTING

Sometimes you'll need to be able to carry out repairs and remove and refit an accessory in the field. That's why we developed them all to be easy to fit, with simple fitting instructions.



Vehicle wrap shown is not available for purchase.

KEEP GOING



# EXTERIOR

ACCESSORY	DESCRIPTION	COMPONENT DETAIL	PART NUMBER	REMARKS
<b>Side Runners</b>	Improves accessibility to the cabin, and adds an extra layer of protection when off-roading. Has slip-resistant footholds and can be used to help gain access to full length of the cargo area on the roof. Load capacity: 300kg per side (Static).	Side Runner left, including fittings Side Runner right, including fittings	GRA-0A82-000590	Not compatible with Rock Sliders
<b>Rock Sliders</b>	Additional protection for the body and chassis of your vehicle. Made of heavy-duty powder-coated steel, these Rock Sliders can also be used as anchoring points for Hi-Lift Jacks. Load capacity: 2,000kg from underside.	Rock Slider left, including fittings Rock Slider right, including fittings	GRA-0B06-031250	Not compatible with Side Runners
<b>Bull Bar</b>	Provides additional protection from impact to the front grill, lights and bodywork. Bolt on and compatible with the 5.5 tonne winch. Can also be used as mounting point for additional accessories (up to 150kg).	Bull Bar, including fittings	GRA-0A81-001160	Compatible with the Integrated Heavy Duty Winch Front Metallic Bumper required Deactivation of front parking sensors is required (where applicable) Off-Road use only in the EU and the UK
<b>Side Protection Rails</b>	Provides extra protection for the fenders when off-road, rock crawling or from any other impact.	Side Protection Rail left, including fittings Side Protection Rail right, including fittings	GRA-0B05-002590	Bull bar and rock sliders or side steps are required to fit the side rails Off-Road use only in the EU and the UK
<b>LED Light Bar</b>	Enhances lighting performance while driving in challenging off-road environments and conveniently mounts to the Roof Rack or Cross-bars, connecting to the optional High Load Auxiliary Switch Panel & Electrical Preparation. 17,640 Lumen.	LED Light Bar, including fittings & cover	GRA-0A71-010730	Off-road use only High Load Auxiliary Switch Panel & Electrical Preparation (option) required
<b>Checker Plates</b>	Allows you to stand on the front fenders without damaging the bodywork, and protects the paintwork from small knocks, scratches or dents. They also provide a useful step to access the roof to load and unload cargo. Load capacity: 150kg.	Checker Plate left, including fittings Checker Plate right, including fittings	GRA-0A83-002540	Off-Road use only in the EU and the UK
<b>Cyclone Pre-Cleaner</b>	Keeps out dust and dirt by spinning the air to provide an extra filtration layer for the Raised Air Intake. Providing the engine with cleaner airflow.	Cyclone Pre-Cleaner Raised Air Intake Adaptor, including fittings	GRA-0B14-018190	Raised air intake (option) required
<b>Locking Wheel Nuts</b>	Keep your wheels secure with this complete set for all four wheels, plus your spare. Compatible with all INEOS wheels, and the Spare Wheel Lockable Storage Box.	Locking Wheel Nuts Set Silver (x5), including key	GRA-0A91-001210	Also available as option
<b>Removable Rear Winch</b>	Removable self-recovery RED winch that mounts to the optional rear vertical towing interface and connects to the High Load Auxiliary Switch Panel & Electrical Preparation (option). Portable, so can be shared among fleet vehicles easily.	Removable Rear Winch Tow Mounting Kit	GRA-0B11-018180	Off-road use only High Load Auxiliary Switch Panel & Electrical Preparation (option) required Rear Towing Interface (option) required
<b>Recovery Kit</b>	The RED Winches recovery kit provides useful tools to improve the capability of the winch, while also increasing safety and security. Contains: 1x Alloy pulley - MBS 240kn/24,473kg/53,953lbs 2x Bow shackle - 4T WLL 2x Synthetic soft shackle - 12mm rope MBS 12T 1x Non Kinetic Strap 10M - 11T 1x Non Kinetic Strap 4M - 12T 1x Tree Saver Strop (Roundslings) 3M - MBS 10T 1x Pair of gloves 1x Canvas barrel bag 24L	Recovery Kit	GRA-0B12-001290	

**KEEP GOING**



# INTERIOR

ACCESSORY	DESCRIPTION	COMPONENT DETAIL	PART NUMBER	REMARKS
<b>Seat Covers</b>	Protects your seats from water, mud and UV damage, as well as general wear and tear from passengers and pets. Airbag compatible.	Seat Covers, front row Seat Covers, second row	GRA-0A65-001120 GRA-0A65-001130	
<b>Rubber Floor Mats</b>	High-walled design helps protect floor from water, sand or dirt, perfect whatever the weather conditions.	Rubber Floor Mats, left hand drive Rubber Floor Mats, right hand drive	GRA-0A63-001100 GRA-0A64-001110	
<b>Carpet Floor Mats</b>	Enhance the appearance of your vehicle's interior, while protecting the floor trim from wear and dirt.	Carpet Floor Mats, left hand drive Carpet Floor Mats, right hand drive	GRA-0A61-001080 GRA-0A62-001090	Also available as option
<b>Tailgate Table</b>	Mounted on the rear 70 door it has two uses: unfolded as a table, or as a panel to secure kit when in the upright position. Load capacity: 30kg (static), 10kg (dynamic).	Tailgate Table, including fittings	GRA-0A34-001000	
<b>Cargo Barrier</b>	Helps increase safety inside your vehicle, keeps pets, cargo and other contents safely away from driver and passengers.	Cargo Barrier, including fittings	GRA-0A41-001030	Not compatible with loadspace partition net
<b>Loadspace Divider</b>	Separate your pets, cargo, shopping, and luggage by splitting your vehicle's loadspace into two separate sections for increased safety while on the move.	Loadspace Divider, including fittings	GRA-0A41-022610	Utility Cargo Barrier (Half Height) required Not compatible with Cargo Management System
<b>Cargo Management System</b>	Attaches to the Interior Utility Rails, providing a flexible way to secure and divide cargo in the loadspace. Keeping it, and you, safe on the move.	Cargo Management System, including fittings	GRA-0A42-001050	Interior Utility Rails (option) required
<b>Luggage Organiser</b>	Made from tough material with sturdy side walls, it's ideal for carrying and tidying groceries, toys, sporting equipment, tools and more. Collapsible and with a capacity of 45 litres.	Luggage Organiser	GRA-0A36-001020	
<b>Loadspace Partition Net</b>	Simple, effective way to protect passengers from stowed items by preventing them from entering the passenger compartment. Lightweight and easy to install.	Loadspace Partition Net, including fittings	GRA-0A41-001450	Not compatible with Cargo Barrier
<b>Luggage Net</b>	Secure items and luggage and prevent them from moving around the loadspace during transit. Elasticated and easy to attach to the Loadspace Tie-Down Rings or Quick Release Tie-Down Rings.	Luggage Net	GRA-0A52-001070	
<b>Quick Release Tie-down Rings</b>	Safely secure luggage or other loads to both the Interior Utility Rails and Exterior Utility Belt of your vehicle.	Quick Release Tie-down Rings	GRA-0A54-001400	



# UP TOP

ACCESSORY	DESCRIPTION	COMPONENT DETAIL	PART NUMBER	REMARKS
<b>Roof Rack</b>	Secure cargo on the roof, including luggage, and mounts for bicycles, canoes, kayaks, skis, etc, without having to use up cabin space. Load capacity: 90kg (dynamic) and 360kg (static).	Full Length Platform Fitting kit	GRA-0A01-018160	
<b>Cross-Bars</b>	Lightweight bars that allow you to make use of the roof to transport extra cargo or kit. Load capacity: 75kg (dynamic) and 375kg (static).	Cross-bars Fitting kit	GRA-0A02-018170	
<b>Bike Carrier</b>	Secure and carry bicycles on the roof of your vehicle easily without having to disassemble the bike. Suitable for: fat tyre bikes, child bikes, mountain bikes, road bikes.	Bike Carrier, including fittings	GRA-0A11-000960	Roof Cross-bars required Designed and manufactured by Rhino Rack
<b>Kayak Mount Saddles</b>	Easily load and carry a kayak safely on the roof of your vehicle by attaching it to front and rear saddles.	Kayak Mount Saddles, including fittings	GRA-0A14-001440	Roof Cross-bars required Designed and manufactured by Rhino Rack
<b>Kayak Mount J Style</b>	Carry one kayak securely in J-cradle position, or two stacked vertically on the roof.	Kayak Mount J Style, including fittings	GRA-0A14-001430	Roof Cross-bars required Designed and manufactured by Rhino Rack
<b>Ski/Snowboard Carrier</b>	Carry four pairs of skis or two snowboards on the roof of your vehicle.	Ski/Snowboard Carrier, including fittings	GRA-0A13-000980	Roof Cross-bars required Designed and manufactured by Rhino Rack
<b>Cargo Box</b>	Store luggage and equipment in a waterproof container on the roof of your vehicle and avoid filling up your cabin space.	Cargo Box, including fittings	GRA-0A22-001580	Roof Cross-bars required Designed and manufactured by Rhino Rack
<b>Adjustable Load Holder</b>	Safely transport and store heavy loads such as timber, ladders, canoes and more on the Roof Rack or Cross-bars.	Adjustable Load Holder, including fittings	GRA-0A51-001530	Roof Cross-bars required Designed and manufactured by Rhino Rack
<b>Batwing Side Awning</b>	Mounted on the side of the Roof Rack and deploying 270°, this 'batwing' awning provides shade and protection from the elements.	Batwing Side Awning, including fittings	GRA-0B25-001310	Roof Cross-bars or Roof Rack required Designed and manufactured by Rhino Rack
<b>Surfboard Carrier</b>	Carry all types of surfboards on the roof of your vehicle, giving you a clear view of the rear and side of your Grenadier as you drive. Comes with tie down straps.	Surfboard Carrier	GRA-0A12-000970	Roof Rack required Designed and manufactured by Rhino Rack
<b>Tool Bracket</b>	Fix an axe or shovel in an easily accessible and secure place on the Roof Rack of your vehicle.	Tool Bracket, including fittings	GRA-0A16-001600	Roof Cross-bars or Roof Rack required Designed and manufactured by Rhino Rack
<b>Hi-Lift Jack Mount</b>	The secure way to carry a Hi-Lift Jack by fixing it to the Roof Rack	Hi-Lift Jack Mount, including fittings	GRA-0B31-001320	Roof Rack required Designed and manufactured by Rhino Rack
<b>Sand Ladder Side Mounting Brackets</b>	Secure sand ladders on the side of the Roof Rack to free up cabin or Roof Rack space.	Sand Ladder Side Mounting Brackets, including fittings	GRA-0B13-001480	Roof Rack required Designed and manufactured by Rhino Rack

**KEEP GOING**



# UP TOP

ACCESSORY	DESCRIPTION	COMPONENT DETAIL	PART NUMBER	REMARKS
<b>Sand Ladder Flat Mounting Brackets</b>	Secure sand ladders flat on the Roof Rack of your vehicle to free up cabin space	Sand Ladder Flat Mounting Brackets, including fittings	GRA-0B13-001470	Roof Rack required Designed and manufactured by Rhino Rack
<b>RotopaX™ Mounting Bracket Fitting Kit</b>	Secure RotopaX™ jerry cans (max 18kg) onto the Roof Rack.	RotopaX™ Mounting Bracket Fitting Kit	GRA-0A55-001560	Roof Rack required RotopaX™ container and RotopaX™ mount not included Designed and manufactured by Rhino Rack
<b>Spare Wheel Carrier</b>	Transport a spare wheel on the Roof Rack securely.	Spare Wheel Carrier, including fittings	GRA-0A93-001590	Roof Rack required Designed and manufactured by Rhino Rack
<b>Jerry Can Mount</b>	Safely secure and transport a jerry can (10 or 20-litre) on the Roof Rack.	Jerry Can Mount, including fittings	GRA-0B23-001460	Roof Rack required Designed and manufactured by Rhino Rack
<b>Gas Bottle Holder</b>	Transport different gas or propane bottles (4kg) on the Roof Rack simply and securely.	Gas Bottle Holder, including fittings	GRA-0B22-001300	Roof Rack required Designed and manufactured by Rhino Rack
<b>Roof Tie-down Rings</b>	Secure kit, luggage or any other load to the Roof Rack or Cross-bars.	Roof Tie Down Rings (x4)	GRA-0A54-001540	Roof Cross-bars or Roof Rack required Designed and manufactured by Rhino Rack
<b>Cargo Load Straps</b>	With these two 5.5 metre straps you can secure kit or large loads on the Roof Rack, Cross-bars or inside of your vehicle.	Cargo Load Straps (x2)	GRA-0A51-001060	Designed and manufactured by Rhino Rack
<b>Load Corner Brackets</b>	Secure any square, hard-shelled container on the roof of your vehicle – including coolers, storage bins, or toolboxes.	Load Corner Brackets, including fittings	GRA-0A16-001510	Roof Rack required Designed and manufactured by Rhino Rack
<b>Lockdown Security Cable</b>	Adds security and peace of mind when you leave items on the roof of your vehicle by locking them in place.	Lockdown Security Cable, including fittings	GRA-0A54-001550	Roof Cross-bars or Roof Rack required Designed and manufactured by Rhino Rack
<b>Work Lamp Bracket</b>	Fit small work or spot lights to the roof of your vehicle.	Work Lamp Bracket, including fittings	GRA-0A72-001490	Roof Cross-bars or Roof Rack required Designed and manufactured by Rhino Rack High Load Auxiliary Switch Panel & Electrical Preparation (option) recommended
<b>Folding Aerial Mount</b>	Versatile and offering 180° rotation, this mount is perfect for adding aerials, antennas, flags, small LEDs or spotlights to your Roof Rack or Cross-bars.	Folding Aerial Mount, including fittings	GRA-0A04-001420	Roof Cross-bars or Roof Rack required Designed and manufactured by Rhino Rack
<b>Heavy Duty Shovel</b>	Heavy duty, zinc-plated, high-carbon steel spade.	Heavy Duty Shovel	GRA-0B32-001520	Designed and manufactured by Rhino Rack

**KEEP GOING**





Written and visual depictions (including photographs and colours) of the vehicle and or accessories within this brochure are purely illustrative and may vary from production models and are subject to change without notice.

The maximum roof load of the vehicle as specified in the owner's manual must not be exceeded. The total roof load consists of; the weight of the roof accessories, the weight of the roof rack or cross bars and the weight of the Roof accessory contents.

INEOS reserves the right to make updates to the product offering including specifications, options and accessories. As such, the quoted prices and specifications in the (Price List/Brochure/Website/Configurator) are indicative and may not reflect current offering and availability. Pricing and details provided do not constitute an offer for the sale of any particular vehicle at any particular price or specification.

Optional features, accessories and their availability may differ by vehicle (bodystyle and powertrain) and country or require the installation of other features in order to be fitted. Note that some standard features may be replaced when specifying a vehicle or selecting trim levels. Please contact your local Retail Partner for more details or configure your vehicle online. Warranty periods offered by INEOS on certain features may be limited and differ in duration. Please refer to the INEOS Automotive Manufacturers Warranty Terms and Conditions for details of variations and exceptions.

Additional options offered for the vehicle may affect performance, emissions, exterior dimensions and off-/on-road geometry. Loading equipment on the roof may change the vehicle's handling characteristics and users should not load the vehicle, any options or accessories (or any part of them) beyond their intended capacities.

Off-road driving and use of related equipment (including options and accessories) requires advanced training and experience. Improper use of the vehicle or other equipment may be unsafe and could result in property damage and/or injury to users and/or other parties. It is the user's responsibility to check the vehicle, equipment, route and conditions ahead before proceeding. Consult the Owner's Manual, applicable accessories manual/instructions or your closest Retail Partner for more detail.

The Utility Belt option has restricted usage on-road, dependent on local laws.

Only use in-car features when safe to do so. Driving while distracted can result in loss of vehicle control, damage to property, injury or death. Always obey local laws and speed limits.

Vehicle wrap shown is not available for purchase.

---

Image credits (in order of appearance):

Jordi Roots, Professional Driver

Peanut Birchenough-Dwyer, INEOS Grenadier Golden Girl (Golden Retriever)

Maria Rudkin, INEOS Grenadier Campaign Lead

Samara Cardenas, INEOS Grenadier Accessories Specialist

Joshua Read, INEOS Grenadier Accessories Module Lead

Mark Wilson, INEOS Grenadier Technical Support Engineer

Claire Birchenough-Dwyer, INEOS Grenadier Brand Communications Manager

Luis Ramos Martin, INEOS Grenadier Regional Aftersales Manager - Iberia

Eros Albarran, Producer